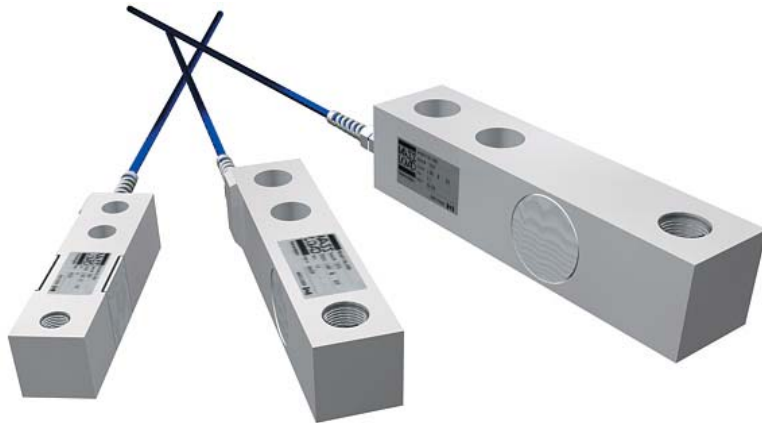


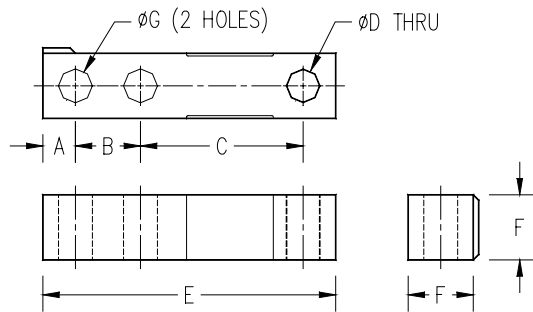
# ML100 Single Ended Shearbeam



### Capacities:

- 1,000 lbs. (450 kg)
- 2,000 lbs (900 kg)
- 2,500 lbs (1100 kg)
- 4,000 lbs (1,800 kg)
- 5,000 lbs (2,250 kg)
- 10,000 lbs (4,500 kg)
- 20,000 lbs (9,000 kg)

The ML100 single ended shearbeam is a versatile loadcell. It can be used as the weigh sensor in a variety of different applications including floor scales, blenders, hoppers, and tank scales. Using Massloads various weighing assemblies, it can be used for nearly any weighing situation.



### Performance Specifications

Safe Overload	150%
Full Scale Output	3mv/V +/- .25%
Maximum Excitation	15 VDC
Non-Linearity	<0.03% FS
Hysteresis	<0.02%FS
Non-Repeatability	<0.01% FS
Thermal Sensitivity Shift	0.0008% of reading/°F
Thermal Zero Shift	0.0015% FS/°F
Barometric Effect	NIL
Bridge Resistance	350 Ω
Operating Temp Range	-40°C to +57°C

Be assured of accurate and reliable weighing using the ML100.

This cell is available in stainless or nickel plated alloy steel.



Capacity	A		B		C		D	E		F		G	
	in	mm	in	mm	in	mm		in	mm	in	mm	in	mm
1k=1000lb													
1k - 4k	0.63	16	1.00	25	3.00	76	1/2"-20 UNF	5.13	130	1.25	32	0.53	13
10k	0.75	19	1.50	38	3.75	95	3/4"-16 UNF	6.75	171	1.50	38	0.78	20
20k	1.00	25	2.00	51	4.75	121	1"-14UNF	8.75	222	2.00	51	1.03	26

