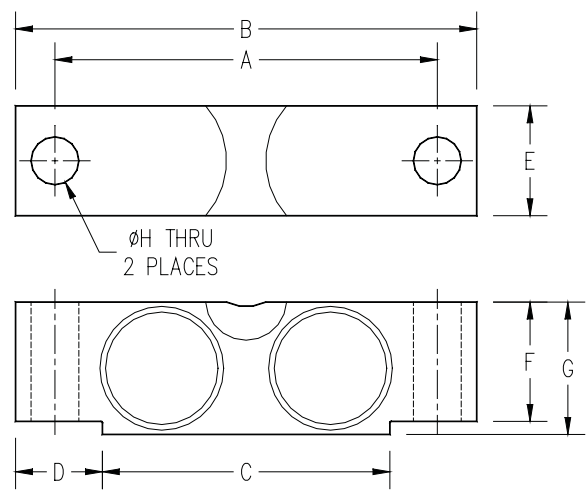




- 15,000 lbs (6,600 kg)
- 25,000 lbs (12,000 kg)
- 50,000 lbs (23,000 kg)
- 75,000 lbs (34,000 kg)
- 100,000 lbs (46,000 kg)
- 200,000 lbs (92,000 kg)

The ML500 is designed for center loading and is ideally suited for large capacity weighing. Common applications include truck, railway track and tank weighing. It is available in nickel plated alloy steel. This quality cell is temperature compensated and completely environmentally protected. Be assured of consistent, reliable, and accurate operation.

Performance Specifications	
Safe Overload	200%
Full Scale Output	3mv/V +/- .25%
Maximum Ecitation	15 VDC
Non-Linearity	<0.03% FS
Hysteresis	<0.02%FS
Non-Repeatability	<0.01% FS
Thermal Sensitivity Shift	0.0008% of reading/°F
Thermal Zero Shift	0.0015% FS/°F
Barometric Effect	NIL
Bridge Resistance	700 Ω
Operating Temp Range	-40°C to +57°C



Capacity	A		B		C		D		E	
	in	mm	in	mm	in	mm	in	mm	in	mm
1k=1000lb										
15k/25k	6.50	165	7.75	197	5.00	127	1.38	35	1.69	43
50k/75k	8.50	216	10.25	260	6.39	162	1.93	49	2.44	62
100k	12.75	324	15.25	387	8.99	228	3.13	80	2.90	74
200k	15.25	387	19.25	489	11.25	286	4.00	102	3.80	97
Capacity	F		G		H		I		J	
	in	mm	in	mm	in	mm	in	mm	in	mm
1k=1000lb										
15k/25k	1.70	43	1.94	49	0.69	18	0.75	19	0.90	23
50k/75k	2.65	67	2.94	75	1.06	27	1.00	25	1.37	35
100k	3.43	87	3.86	98	1.59	40	1.50	38	1.80	46
200k	5.12	130	5.80	147	1.63	41	2.00	51	2.37	60