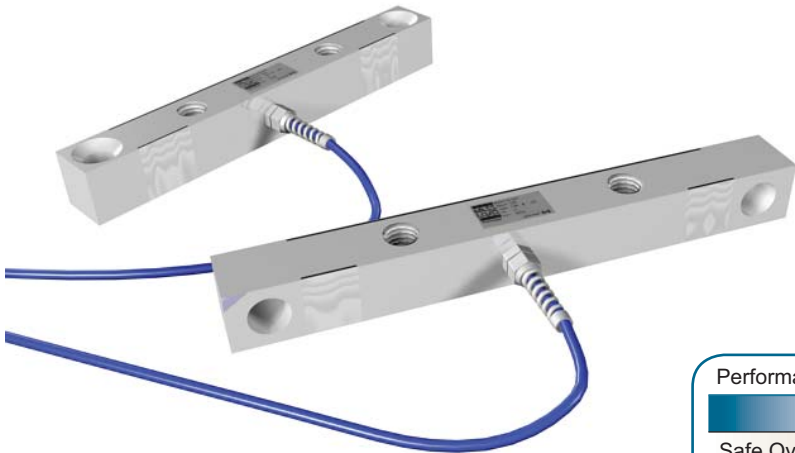


www.massload.com www.massload.com www.massload.com www.massload.com www.massload.com
ML600 Double Ended Shearbeam
 www.massload.com www.massload.com www.massload.com www.massload.com www.massload.com



2,000 lbs (900 kg)
 5,000 lbs (2,250 kg)
 10,000 lbs (4,500 kg)

The ML600 double-ended shearbeam is ideally suited for crane scales, weighpads and rigid mount applications. This loadcell is available in 2k, 5k, and 10k capacities. The 10k model is a low profile cell that comes with countersunk fastening holes and takes the load parallel with fasteners. The other capacities are intended for side mount applications.

Performance Specifications

Safe Overload	200%
Full Scale Output	3mv/V +/- .25%
Maximum Excitation	15 VDC
Non-Linearity	<0.03% FS
Hysteresis	<0.02%FS
Non-Repeatability	<0.01% FS
Thermal Sensitivity Shift	0.0008% of reading/°F
Thermal Zero Shift	0.0015% FS/°F
Barometric Effect	NIL
Bridge Resistance	700 Ω
Operating Temp Range	-40°C to +57°C

